

	UnO	Wino	UnO2	Wino2	TinyBox
# banks	10	10	Up to 200 (*)	Up to 200 (*)	Up to 200
# presets	100	100	Up to 1000 (*)	Up to 1000 (*)	Up to 1000
# msgs/preset	8	8	Unlimited (*)	Unlimited (*)	Unlimited
# MIDI channels	8 (global)	8 (global)	16 (each msg)	16 (each msg)	16 (each msg)
MIDI msg types	PC, CC, Note	PC, CC, Note	All	All	All
MIDI Clock	-	-	Start, Cont, Stop	Start, Cont, Stop	Start, Cont, Stop, Clock
Expr.pedal msg	CC	CC	CC, AfterTouch, PitchBend	CC, AfterTouch, PitchBend	CC, AfterTouch, PitchBend
Pedal sweep curve	Linear	Linear	Linear, Fast- or Slow-rising	Linear, Fast- or Slow-rising	Linear, Fast- or Slow-rising
Bank layout possibilities	10 x 10 or 19 x 5 + 5 stomps	10 x 10 or 19 x 5 + 5 stomps	Any mix of presets/stomps in each bank	Any mix of presets/stomps in each bank	Any mix of presets/stomps in each bank
Max. setup size	2048 bytes	2048 bytes	2048 bytes	2048 bytes	262144 bytes
Editor included	-	+	+	+	+
Direct bank	-	-	+	+	+
Custom delays	-	-	+	+	+
Data variables	-	-	+	+	+
if..then...else	-	-	+	+	+
Wireless MIDI	-	+	-	+	-
Wireless status	-	+	-	+	+(**)
Built-in USB itf	-	-	-	-	+
Setlist support	-	-	-	-	+
MIDI filter/router	-	-	-	-	+
Phantom power	-	-	-	-	+

(*) the total number of banks/presets/messages is limited by the 2048-byte setup memory of the FCB1010. An online version of UnO2ControlCenter allows you to create a setup and inspect its size, in order to verify if it fits in the UnO2/Wino2 based solution, or if it requires the TinyBox hardware extension.

(**) the TinyBox requires a laptop running TinyBoxControlCenter to show the wireless status screen on a tablet (or on the laptop itself).

Editor software for UnO/UnO2/Wino/Wino2/TinyBox

FCB/UnO ControlCenter = editor for UnO / Wino firmware

FCB/UnO ControlCenter is a graphical editor to edit setups for an FCB1010 equipped with Behringer, UnO or Wino firmware. The latest Behringer version (2.5) and all UnO / Wino versions are supported.

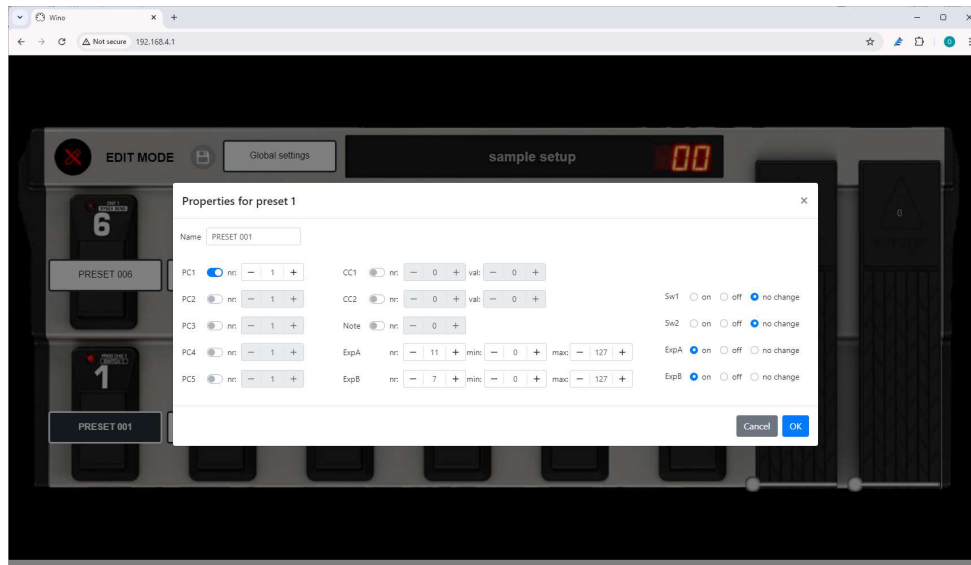


A license for this editor can be purchased at <https://shop.fcb1010.eu/>

The Wino kit allows to upload setups to the FCB1010 through WIFI instead of MIDI SysEx.

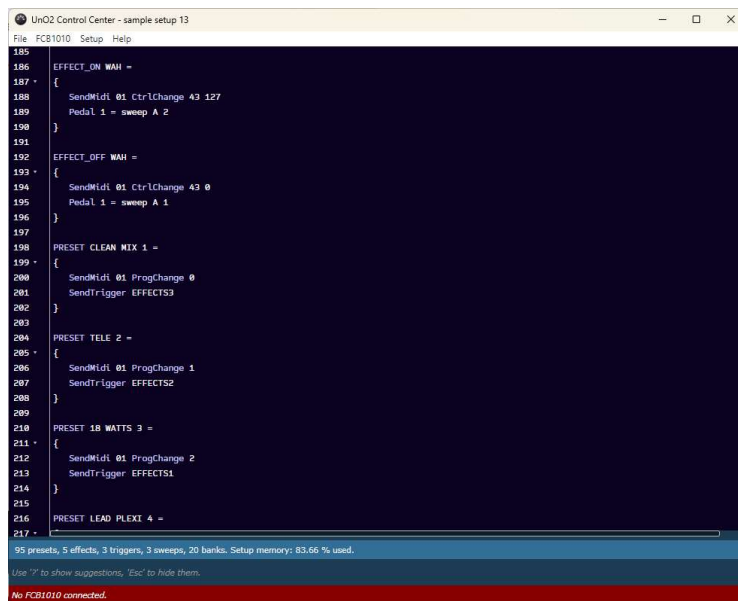
Wino embedded editor

Next to uploading setups created with FCB/UnO ControlCenter, the Wino module also hosts an embedded graphical setup editor, which allows you to create and edit setups without ControlCenter license. The editor runs in a browser, no local installation on laptop or iPad is required.



UnO2 ControlCenter = editor for UnO2 / Wino2 firmware

UnO2 ControlCenter is a text based editor to create setups for an FCB1010 equipped with UnO2 / Wino2 firmware. The text based approach is an essential element of the UnO2 concept. The extended feature set makes a graphical approach unsuitable. Therefore FCB/Uno ControlCenter **cannot** be used to program UnO2 / Wino2 setups.



```
185
186 EFFECT_ON WAH =
187 {
188   SendMidi 01 CtrlChange 43 127
189   Pedal 1 = sweep A 2
190 }
191
192 EFFECT_OFF WAH =
193 {
194   SendMidi 01 CtrlChange 43 0
195   Pedal 1 = sweep A 1
196 }
197
198 PRESET CLEAN MIX 1 =
199 {
200   SendMidi 01 ProgChange 0
201   SendTrigger EFFECTS3
202 }
203
204 PRESET TELE 2 =
205 {
206   SendMidi 01 ProgChange 1
207   SendTrigger EFFECTS2
208 }
209
210 PRESET 18 WATTS 3 =
211 {
212   SendMidi 01 ProgChange 2
213   SendTrigger EFFECTS1
214 }
215
216 PRESET LEAD PLEXT 4 =
217
```

95 presets, 5 effects, 3 triggers, 3 sweeps, 20 banks. Setup memory: 83.66 % used.
Use '?' to show suggestions, 'Esc' to hide them.
No FCB1010 connected.

Since the UnO2 firmware cannot be used without UnO2 ControlCenter, this editor is included in the purchase of the UnO2 firmware.

The Wino2 kit installs a webserver inside the FCB1010. This server contains an embedded version of UnO2 ControlCenter. Therefore the editor no longer needs to be installed on a Windows or Mac computer.

TinyBox ControlCenter = editor for the TinyBox hardware

The TinyBox comes with its own editor software included. It looks identical to UnO2 ControlCenter but supports a larger command set to program the extended TinyBox features.